

# REHABILITATION ADDITIONS

Additions refers to any increase in the square footage of a building.

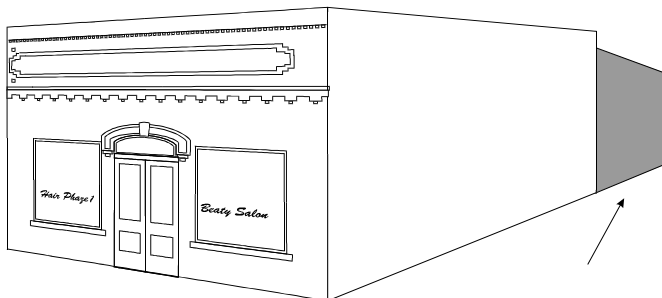
## GOAL:

**The primary goal is to allow expansion while maintaining historic character.**

Actions to achieve the goal:

- ◆ Additions should respect the original portion of the building by:
  - a) being placed away from the public view on the rear elevation or (for buildings not on the square) on a side elevation well behind the facade,
  - b) maintaining the form, orientation, and symmetry of the original structure,
  - c) creating a discernible break at the juncture with the original structure,
  - d) using matching or similar materials such as roofing and siding,
  - e) using matching or similar elements, such as windows, on side elevations and reserving more modern elements for the rear elevation,
  - f) using a degree of ornamentation equal to the original or less, and
  - g) being reversible with a limited loss of historic materials and elements.

38



*additions are best placed at the rear of the building*

---

### **Glossary terms:**

*Elevation: p. 20*

*Facade: p. 20*

*Public view: p. 21*

*Reversible: p. 21*

*Examples: Changes requiring a COA*

- \* Adding an addition to a building.
- \* Removing an addition from a building.

*Examples: Changes not requiring a COA*

- \* Routine maintenance to existing additions.

***Common Mistakes***

- ▶ *Constructing the walls of the addition flush with the facade of the original structure. [A]*
- ▶ *Constructing an addition out of scale which greatly alters the original form of the building.*
- ▶ *Using incompatible materials or details on an addition. [B]*
- ▶ *Removing a large amount of original material to add an addition.*

