

REHABILITATION DOORS

Doors refers to entrances into the building including the doorway and features around the doorway. (see also *Storefronts*, p. 30)

GOAL:

The primary goal is to maintain the historic doors, their design, and their placement.

Actions to achieve the goal:

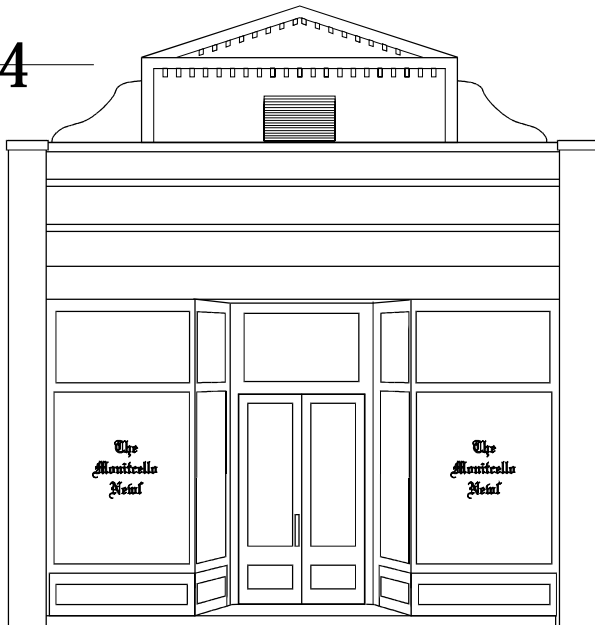
- Maintain and preserve historic doors and surrounding features.
- Repair damaged portions of historic doors rather than replacing the door in total.
- Historic doors damaged beyond repair should be replaced with doors that match in material and design.
- Maintain the historic door placement on the facade including entrances to upper floors.
- Replace non-historic doors with a replication of the historic door if documentation exists or a design typical for the age of the building.

Glossary terms:

Beyond repair: p. 20

Muntin: p. 21

34



Examples: Changes requiring a COA

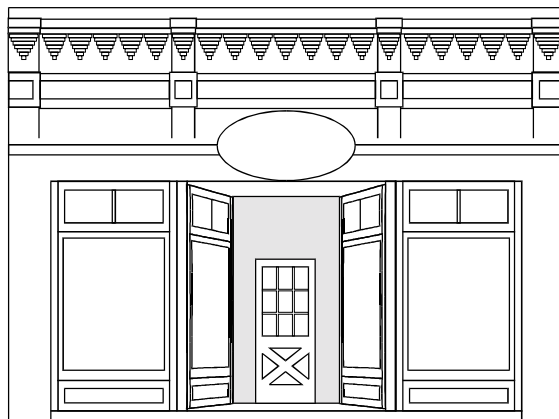
- * Removing and replacing doors.
- * Filling in existing door openings.
- * Adding new door openings.
- * Adding new storm /screen doors.

Examples: Changes not requiring a COA

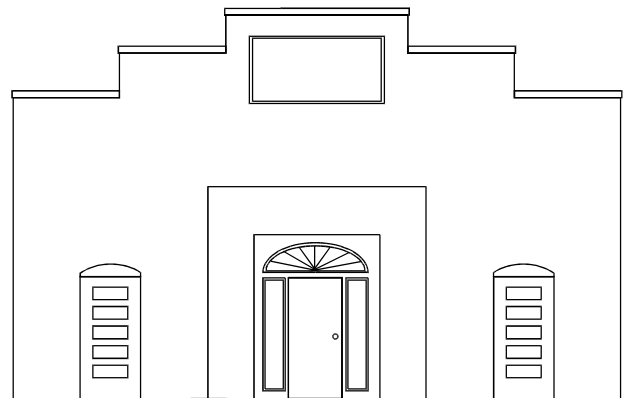
- * Repairing damaged portions of existing doors.
- * Weather-stripping, caulking, painting and other general maintenance.

Common Mistakes

- *Replacing viable historic doors with new doors, even similar looking doors.*
- *Using a door with a residential appearance. [A].*
- *Adding or removing doors on the facade.*
- *Adding sidelights, transoms, fanlights, or other features where none existed before. [B]*



↑ [A]



[B] ↑