



# WALLS & FENCES

Walls and fences refers to nonvegetative elements used in and around a property for safety, security, and screening.

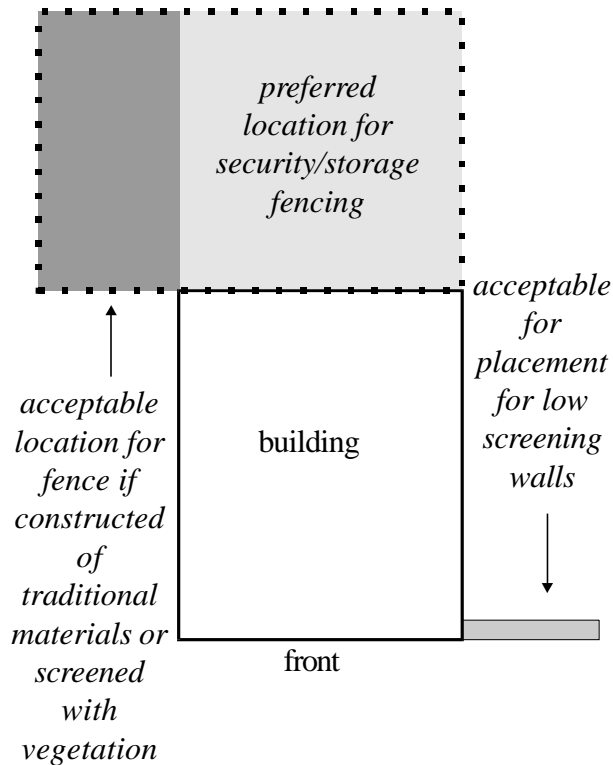
## GOAL:

The primary goal is to maintain the pattern of fencing in the commercial area and to use fencing and walls to screen parking and storage areas.

Actions to achieve the goal:

- Historic fences and retaining walls should be maintained and not removed.
- New security fences should limit their impact by:
  - a) being placed behind the rear elevation, and
  - b) using traditional materials (in most cases wood) or screening fence from the public view with evergreen vegetation or a second traditional fence.
- New screening walls can be used to limit the impact of parking on the district by:
  - a) being of a height to partially screen parked vehicles;
  - b) replicating the facade line of near by historic buildings; and
  - c) using traditional materials (in most cases brick).

50



**Glossary terms:**

*Evergreen vegetation:* p. 20

*Facade line:* p. 20

**Examples: Changes requiring a COA**

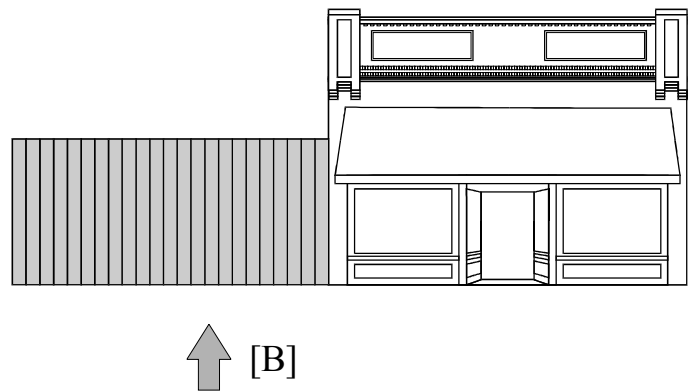
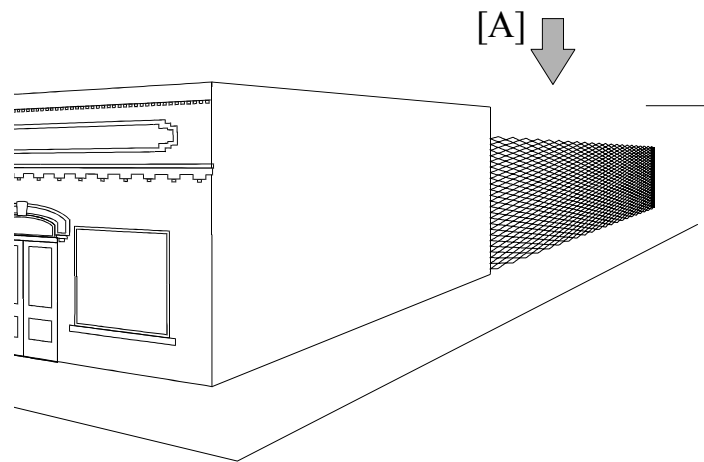
- \* Construction of a new fence.
- \* Construction of a new screening wall.

**Examples: Changes not requiring a COA**

- \* Repair of an existing fence.
- \* Painting an existing fence.
- \* Repair of an existing wall.
- \* Temporary fences at construction sites.

**Common Mistakes**

- ▶ *Using nontraditional materials for fences in the public view. [A]*
- ▶ *Placing a privacy fence flush with the facade of a building. [B]*



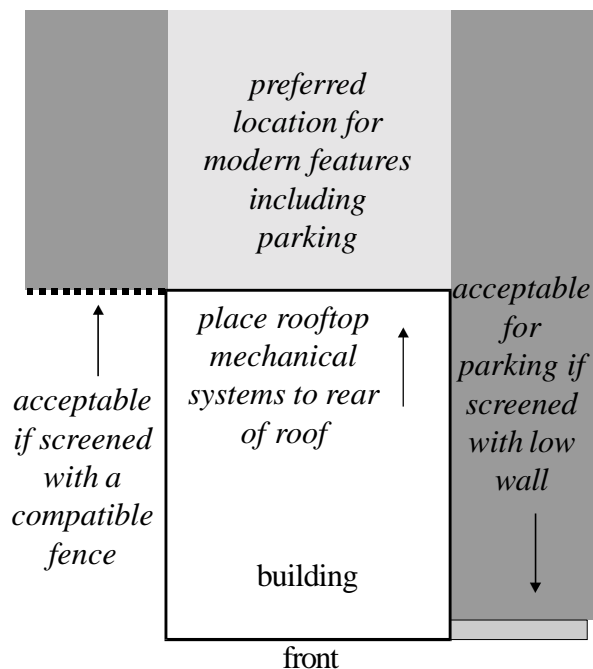
Modern features refers to equipment and functions not used in the past such as dumpsters, fire escapes, mechanical systems, and parking areas.

## GOAL:

**The primary goal is to integrate modern features while limiting the negative impact to the historic district.**

Actions to achieve the goal:

- Mechanical systems placed behind the building and out of the public view.
- Rooftop mechanical systems, utility meters and security lighting should be placed unobtrusively.
- New lighting should use traditional designs appropriate to the character of the building.
- New parking should:
  - a) be placed as unobtrusively as possible;
  - b) use traditional materials: gravel, concrete, stone pavers, though asphalt is allowed in the downtown; and
  - c) use appropriate screening (see *Walls & Fences* p. 50).



**Glossary terms:**

*Facade line:* p. 20

*Public view:* p. 21

**Examples: Changes requiring a COA**

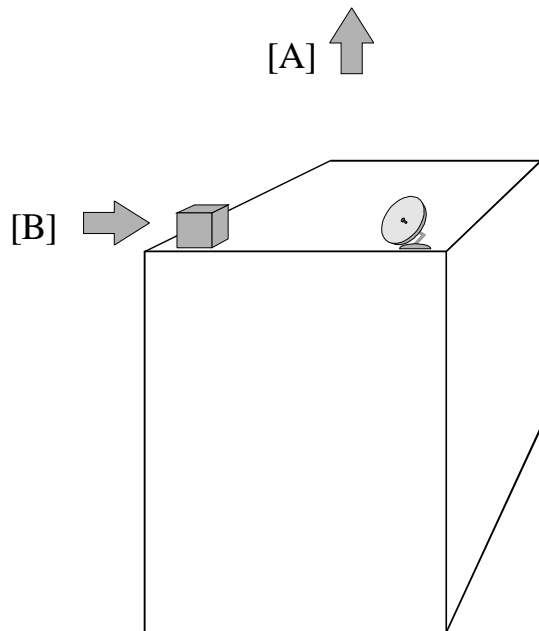
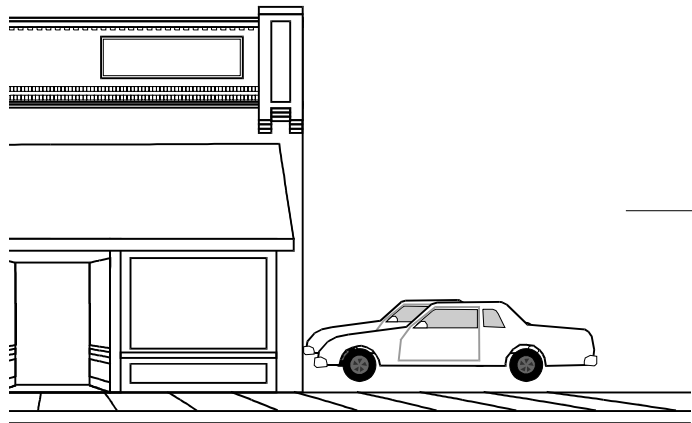
- \* Adding parking areas.
- \* Placing exterior mechanical systems such as satellite dishes, air-conditioning units, or utility meters.
- \* Adding exterior lighting.

**Examples: Changes not requiring a COA**

- \* Resurfacing an existing parking area with the same material.
- \* Interior changes to mechanical systems.
- \* Temporary event lighting.

**Common Mistakes**

- ▶ *Demolishing historic buildings for parking (see demolition p.).*
- ▶ *Failing to screen parking from the public view (see Fences & Walls, p. 48) [A]*
- ▶ *Placing mechanical systems to the front of rooftops. [B]*



---

# *SITE & SETTING SIGNS*

Signs refers to permanent signs for business identification, advertisement, and operation.

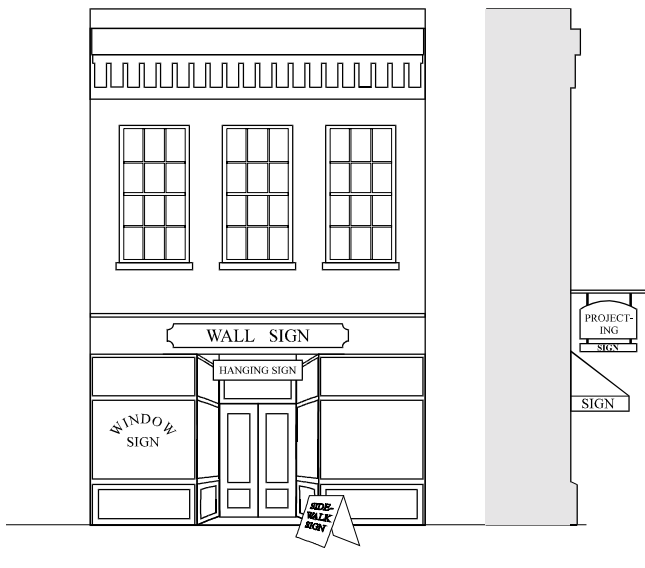
## GOAL:

The primary goal is to create signs which both inform the public and compliment the property where they are located.

Actions to achieve the goal:

- Historic signs should be maintained and preserved
- Signs must conform to the City of Monticello sign ordinance.
- Signs should:
  - a) be limited in number to the minimum necessary for identification purposes,
  - b) use traditional sign locations,
  - c) be of a scale appropriate to the building and the district,
  - d) be painted wood or metal,
  - e) have little ornament or use ornament similar to the style of the building, and
  - f) avoid attachment to roofs or covering architectural details.

54



*Examples: Changes requiring a COA*

\* Placing a new sign on a building or property.

*Examples: Changes not requiring a COA*

\* Placing temporary signs such as event, political, or real estate signs.

**Common Mistakes**

- ▶ *Using internally lit plastic signs.*
- ▶ *Using inappropriately large signs. [A]*
- ▶ *Using signs with a colonial motif. [B]*
- ▶ *Covering architectural details such as the cornice. [C]*
- ▶ *Painting over or stripping historic painted signs.*

