

NEW CONSTRUCTION *MATERIALS & DETAILS*

Materials refers to the composition, texture, and appearance of the exterior surface of a building. Details refers to ornamentation that embellish the building.

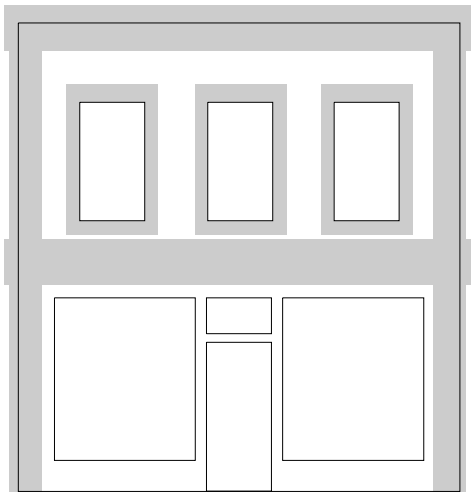
GOAL:

The primary goal is to follow the pattern of use of materials within the historic district.

Actions to achieve the goal:

- ◆ New buildings should respect the historic materials within the district by using the predominant exterior material - namely brick.
- ◆ New buildings should respect the ornamentation within the district by:
 - a) using ornamentation in a manner similar to that of nearby similar historic buildings or similar buildings within the district, and
 - b) using ornamentation to a degree equal to or less than that of nearby similar historic buildings or similar buildings within the district.

48



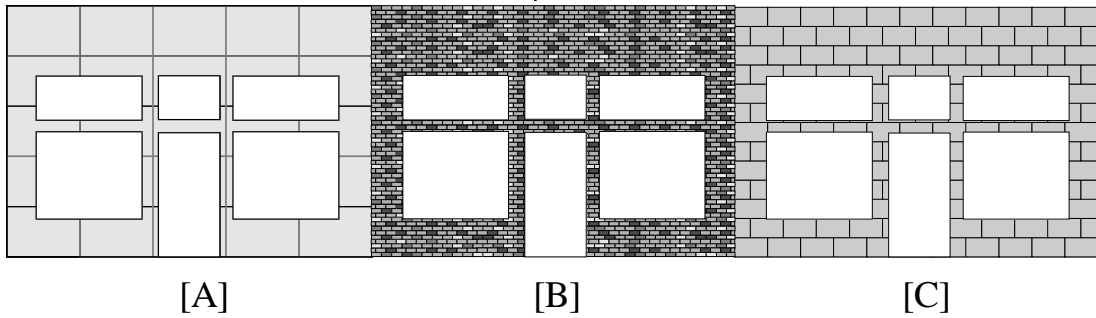
Shaded areas are traditional locations of ornament on commercial buildings.

Glossary terms:

Nearby historic buildings: p. 20

Synthetic stucco (E.I.F.S.): p. 21

Variiegated brick: p. 21



Common Mistakes

- ▶ *Using synthetic stucco (E.I.F.S.) [A]*
- ▶ *Using variegated brick . [B] or concrete block. [C]*
- ▶ *Using any material other than brick on the square.*
- ▶ *Copying historic styles or themes not common to the area such as colonial or wild west. [D]*
- ▶ *Use of stock details which do not match the proportions and degree of craftsmanship of historic details.*

