

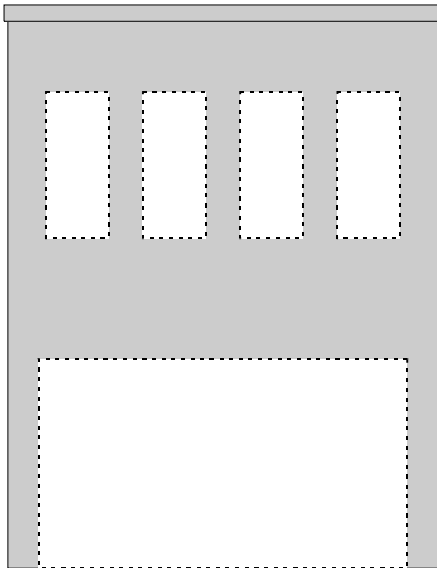
NEW CONSTRUCTION *OPENINGS*

Openings refers to windows and doors. Void is another term for openings.

GOAL:

The primary goal is to follow the solid-to-void ratio characteristic of historic buildings in the district.

46



Downtown commercial buildings have a high degree of void at street level and evenly spaced smaller voids on upper floors.

Actions to achieve the goal:

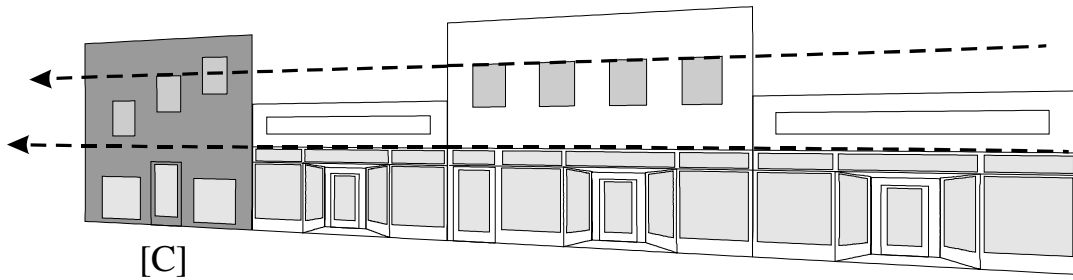
- ◆ New buildings should respect the pattern of openings on historic buildings by:
 - a) using openings of similar dimensions and shape,
 - b) placing or distributing openings in a manner similar to that of nearby similar historic buildings or similar buildings within the district, and
 - c) balancing the ratio of solid-to-void by using the appropriate amount of opening on an elevation.

Glossary terms:

Elevation: p 20

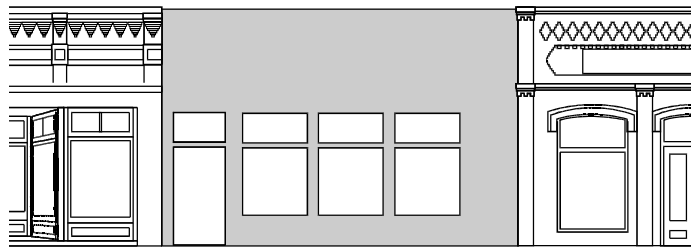
Nearby historic buildings: p. 21

Solid-to-void: p 21.



Common Mistakes

- ▶ *Using an asymmetrical distribution of windows and doors when symmetrical facades are the established pattern with that block. [A]*
- ▶ *Using a high solid-to-void ratio at ground level (the storefront) or a low solid-to-void ratio on upper floors. [B]*
- ▶ *Failing to align openings with other buildings on the same block. [C]*



47

