

NEW CONSTRUCTION *FORM*

Form refers to a building's overall shape and composition. Vertically there are three divisions of form: the roof, the body, and the foundation.

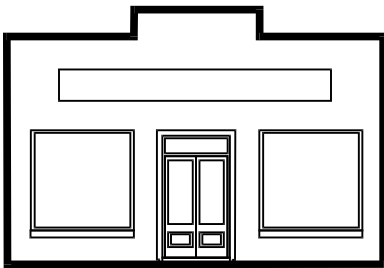
GOAL:

The primary goal is to follow the unique pattern of building forms found within the historic district.

Actions to achieve the goal:

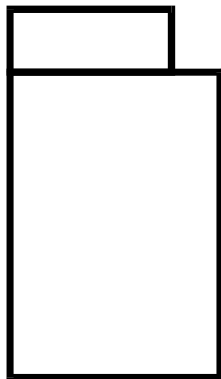
- ◆ New buildings should respect the existing form represented among historic buildings by:
 - a) using roof shapes, pitches, and parapets such as those on nearby similar historic buildings or similar buildings within the district,
 - b) creating a main block and using secondary blocks in a manner similar to that of nearby similar historic buildings or similar buildings within the district, and
 - c) having foundations of the similar height and pattern as similar historic buildings.

44



From the front each building creates a silhouette. On blueprints, this known as an "elevation."

Each building creates a "footprint" created by the exterior walls of the building. On blueprints, this is called the "plan" or "floor plan."



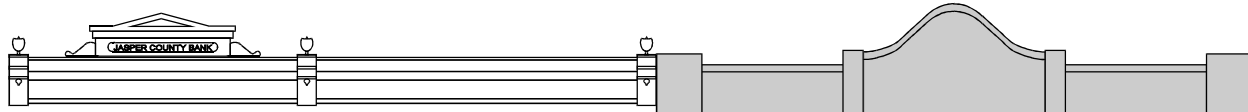
Glossary terms:

Main block: p. 21

Nearby historic buildings: p. 21

Pitch: p. 21

Secondary block: p. 21



[A]

Common Mistakes

- ▶ *Constructing a parapet with a form or style atypical to the area. [A]*
- ▶ *Constructing a building with secondary blocks rather than one main block. [B]*
- ▶ *Constructing a building with a roof form unlike the established pattern. [C]*

