

NEW CONSTRUCTION *SCALE*

Scale refers to a building's dimensions - height, width, and depth - particularly in comparison to other buildings in the vicinity.

GOAL:

The primary goal is to follow the established dimensions of historic buildings within the district.

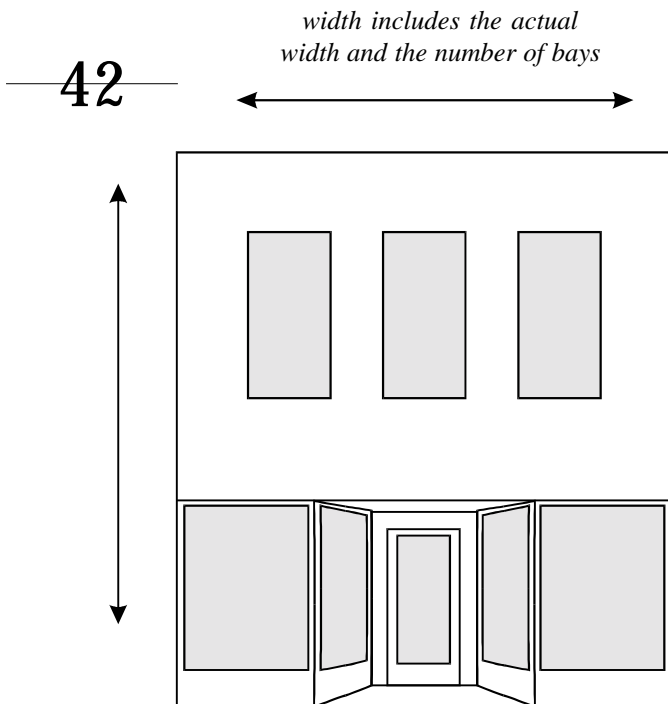
Actions to achieve the goal:

- ◆ New buildings should respect the existing scale of historic buildings by being:
 - a) either one-story or two-story depending upon the uniformity of height displayed by nearby historic buildings,
 - b) approximately the same width as nearby historic buildings of similar form, and
 - c) approximately the same depth of nearby historic buildings; for more depth, new buildings should follow the addition pattern of nearby historic buildings of similar scale.

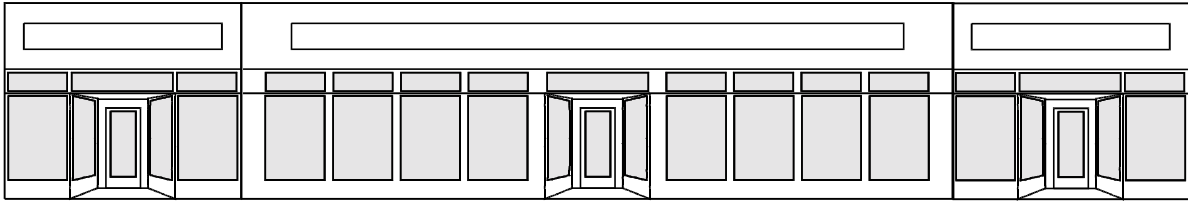
Glossary terms:

Bay: p. 20

Nearby historic buildings: p. 21



height includes both the number of stories as well as story heights



[C]

Common Mistakes

- ▶ *Constructing a building of more than two stories. [A]*
- ▶ *Constructing a building out of scale with its neighbors even though the number of stories is equal. [B]*
- ▶ *Constructing a building that is too wide and creates an inappropriate horizontal appearance. [C]*

